

Bordeaux et Bordeaux Métropole

30 ans de mutations

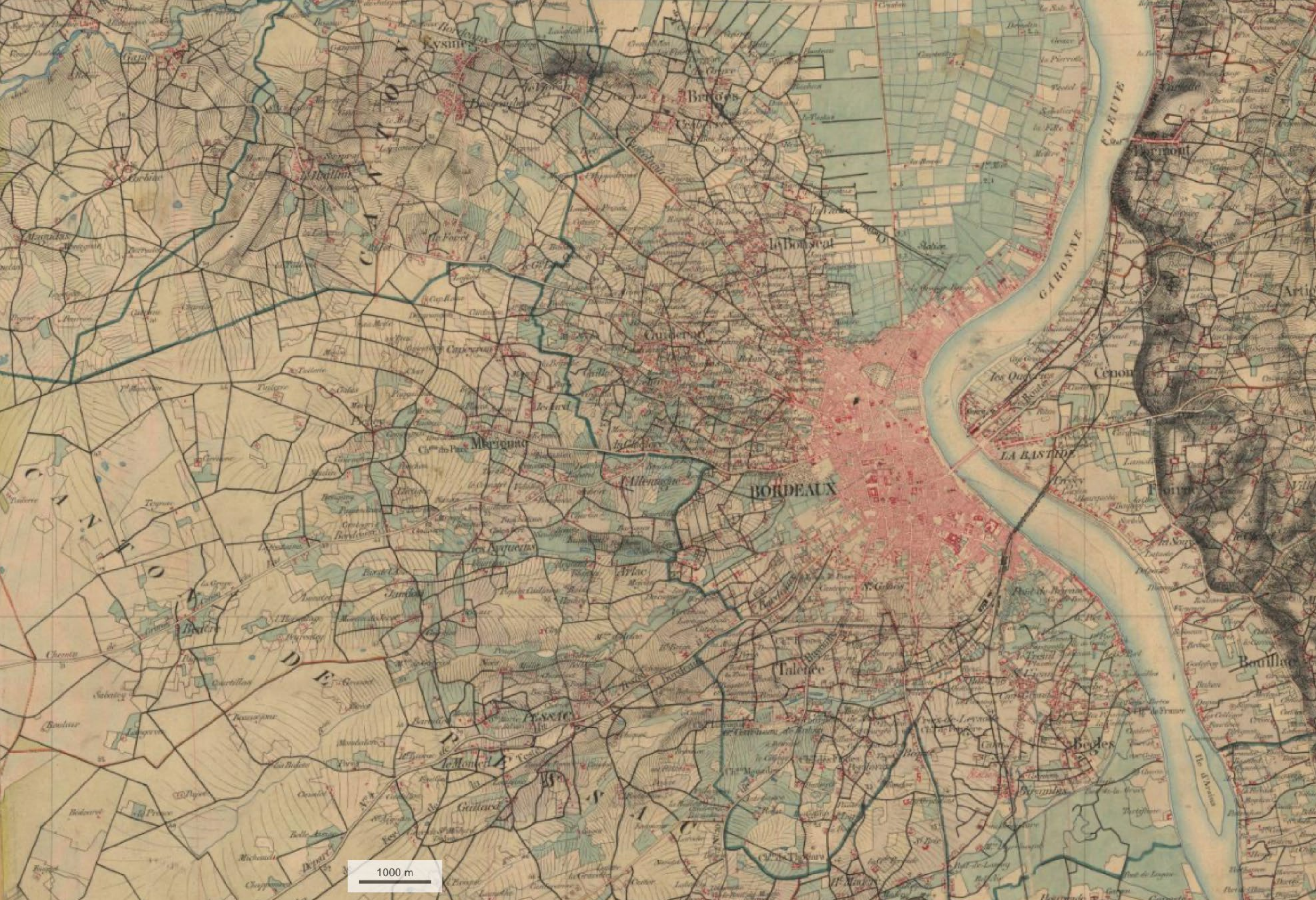
clement
blanchet
architecture

c
b
a

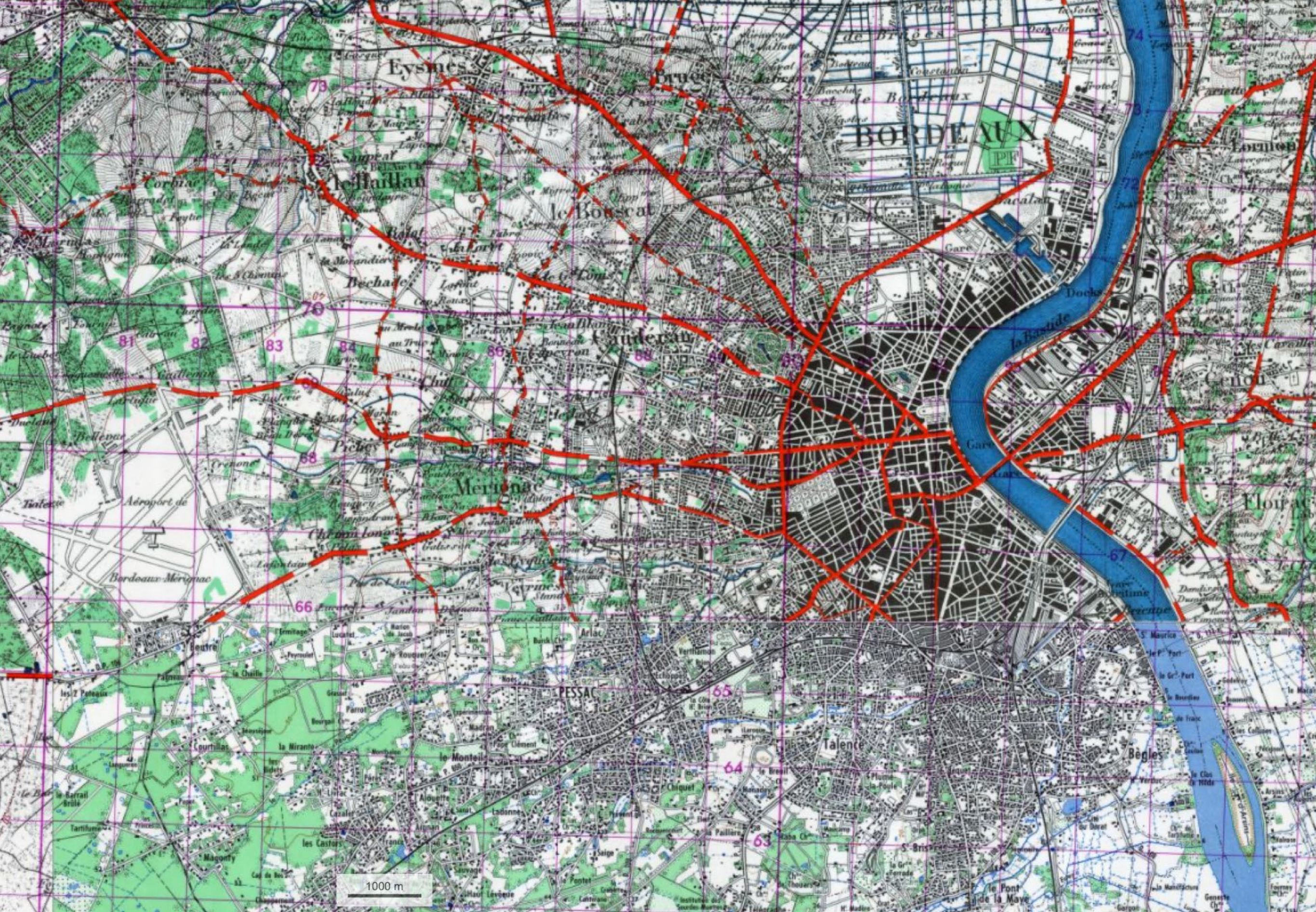




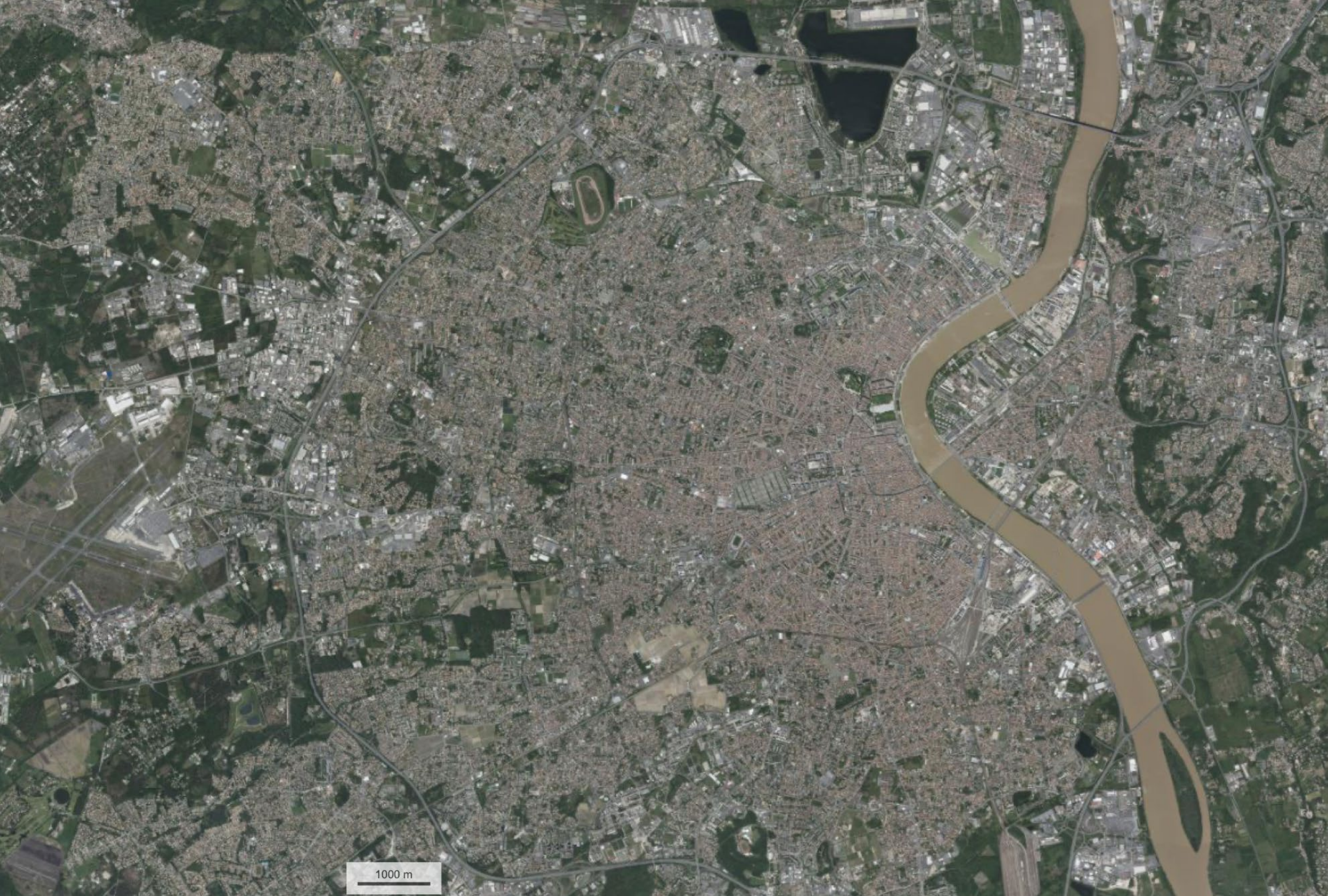
Bordeaux, carte Cassini



Bordeaux, carte Etats Majors

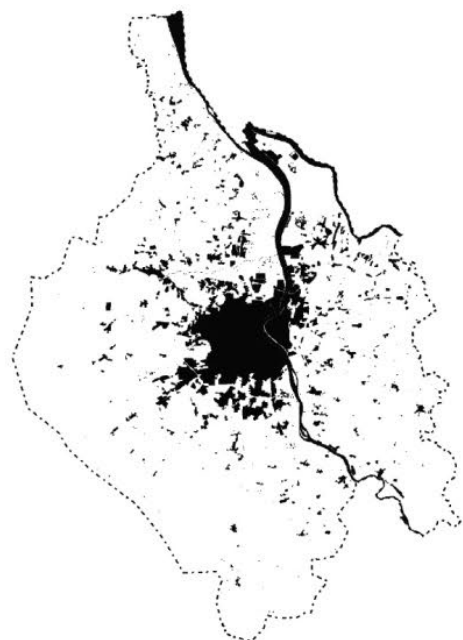


Bordeaux, carte 1950



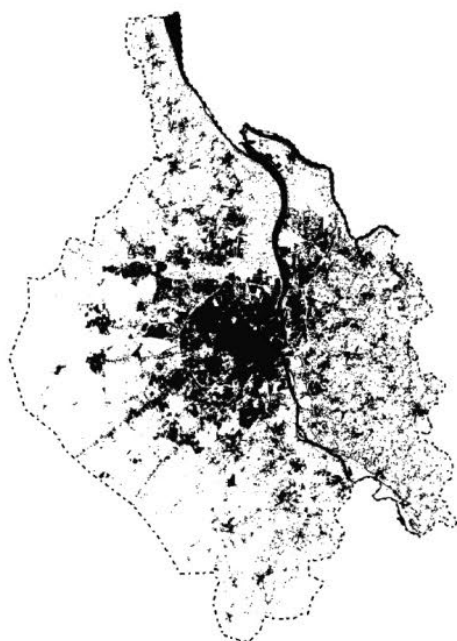
1000 m

Bordeaux, ortho-image 2024



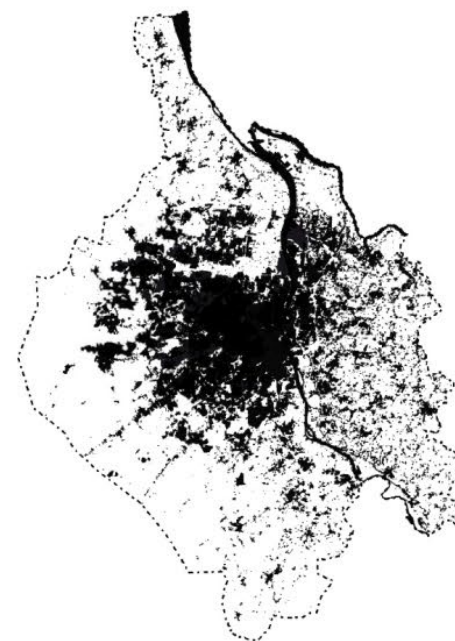
1973

Habitants : 680 000
Surface urbanisée : 14 200 ha
Densité : 47.8 hab/ha



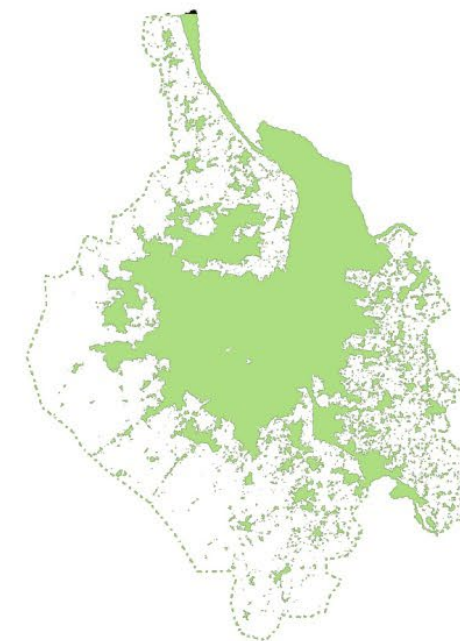
2004

Habitants : 852 000
Surface urbanisée : 38 100 ha
Densité : 22.3 hab/ha

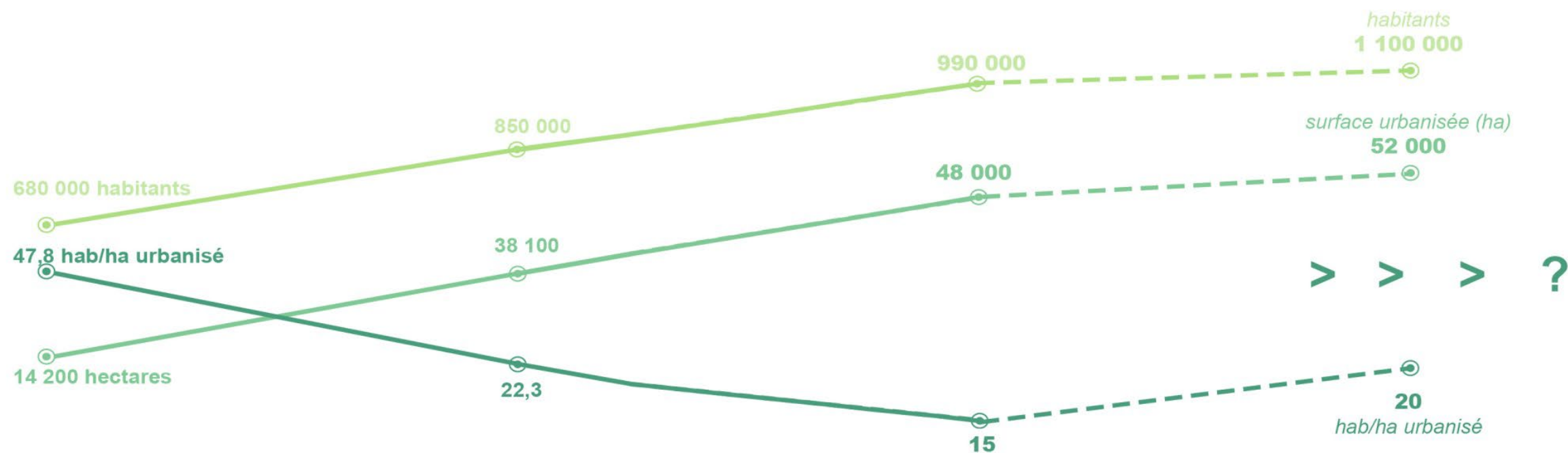


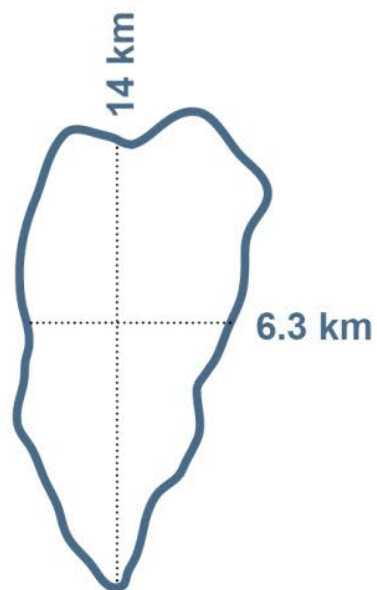
2025

Habitants : 990 000
Surface urbanisée : 48 000 ha
Densité : 15 hab/ha

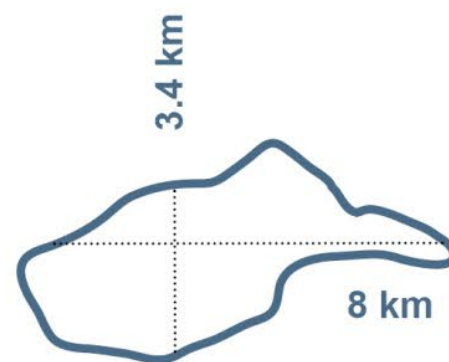


2075

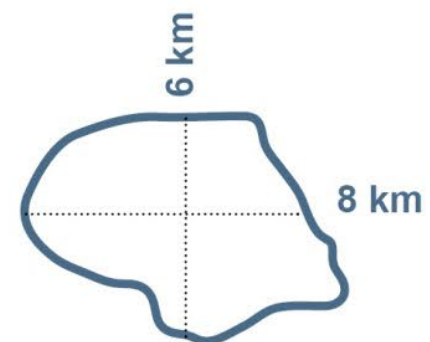




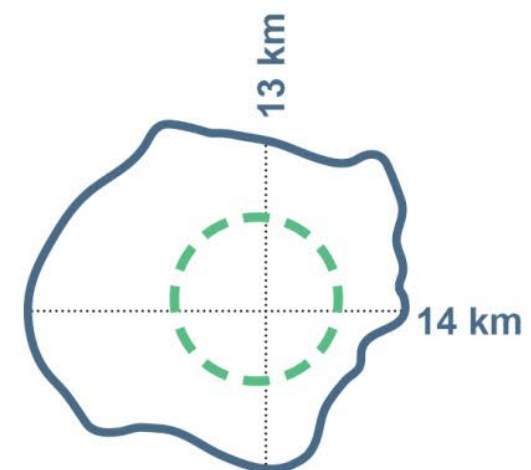
TOKYO
(Yamanote Line)



LONDRES
(Circle Line)



PARIS
(Métro 2,6)



Bordeaux
(Rcade)



Avec le

Tram



c'est demain qui
commence

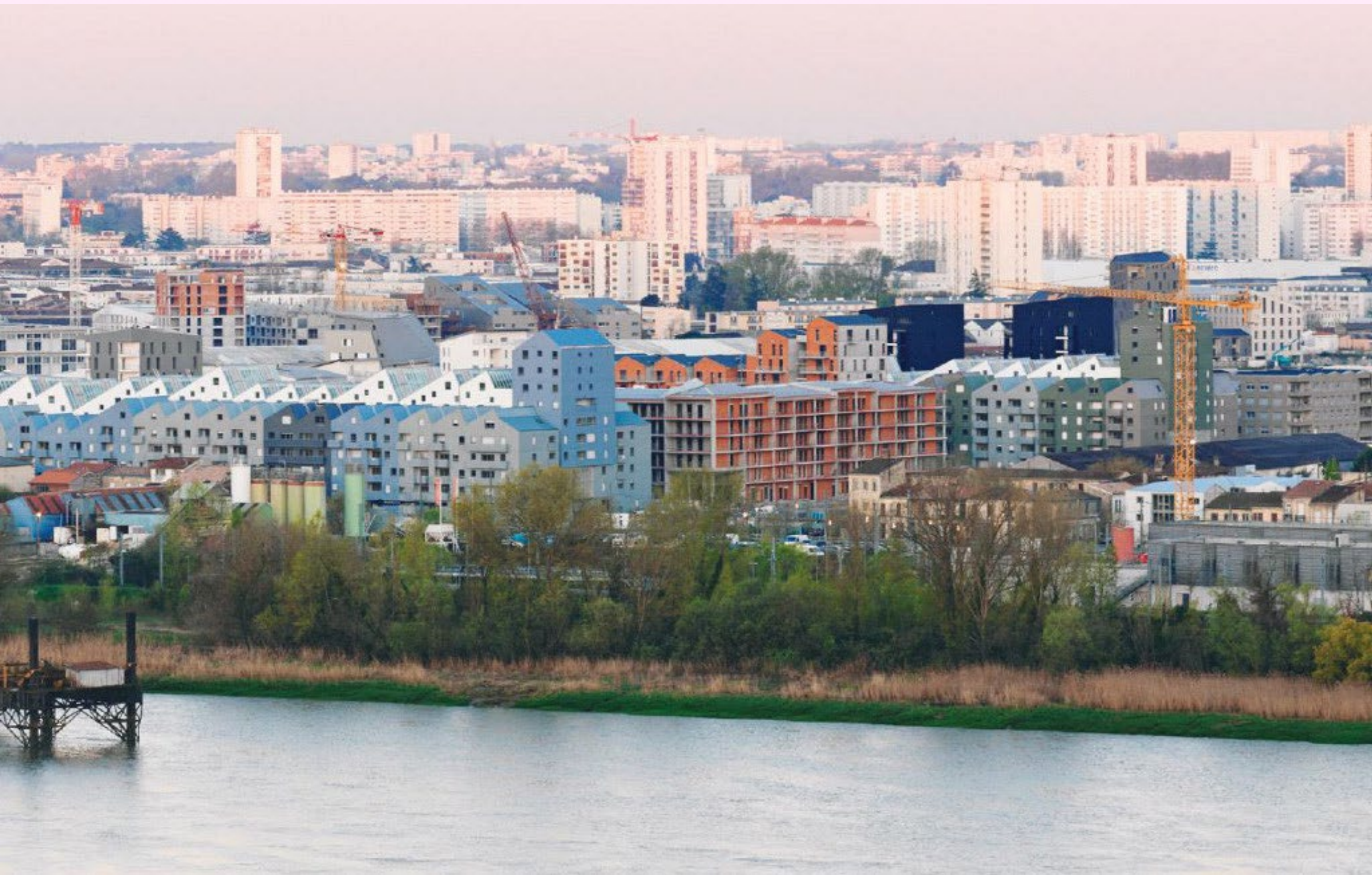










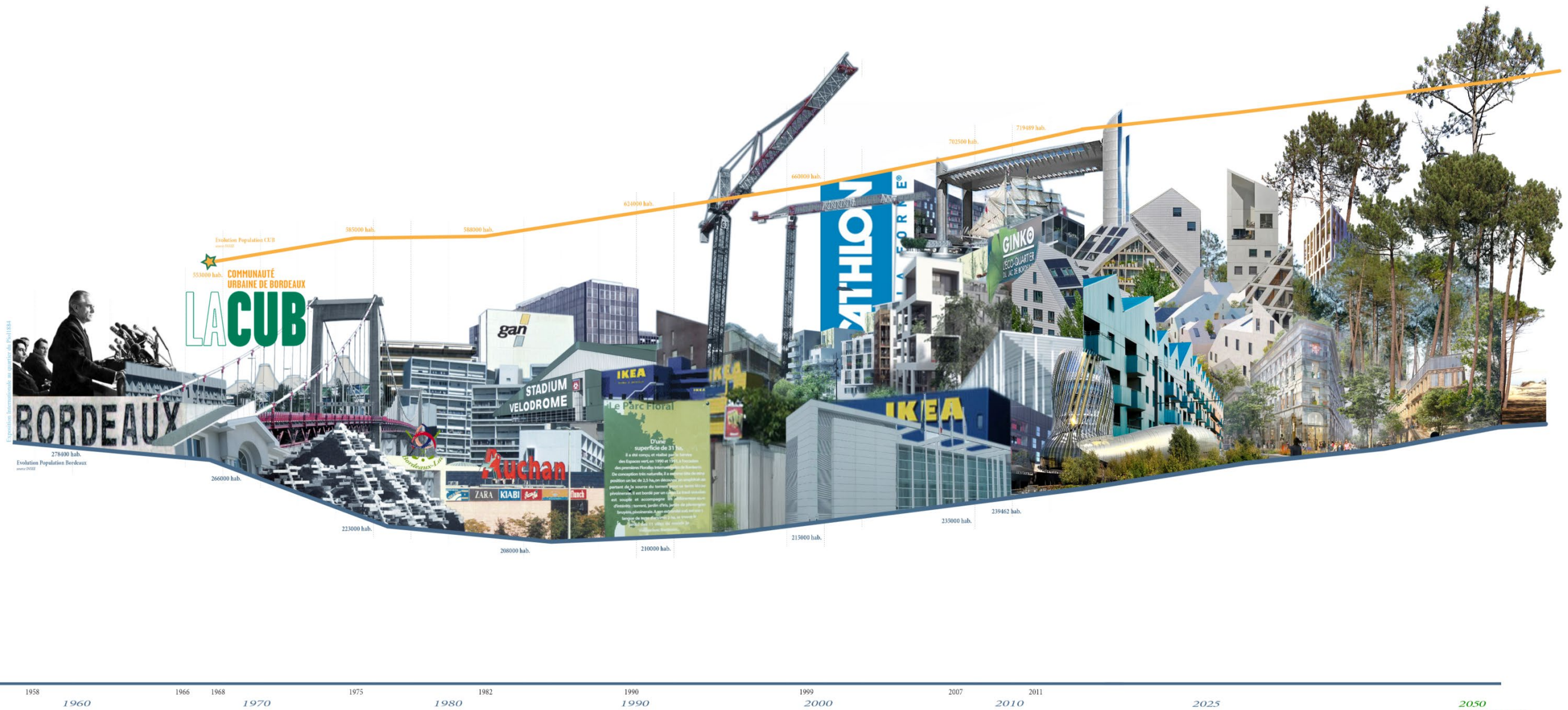




La CUB aujourd'hui...



La CUB dans 20 ans?



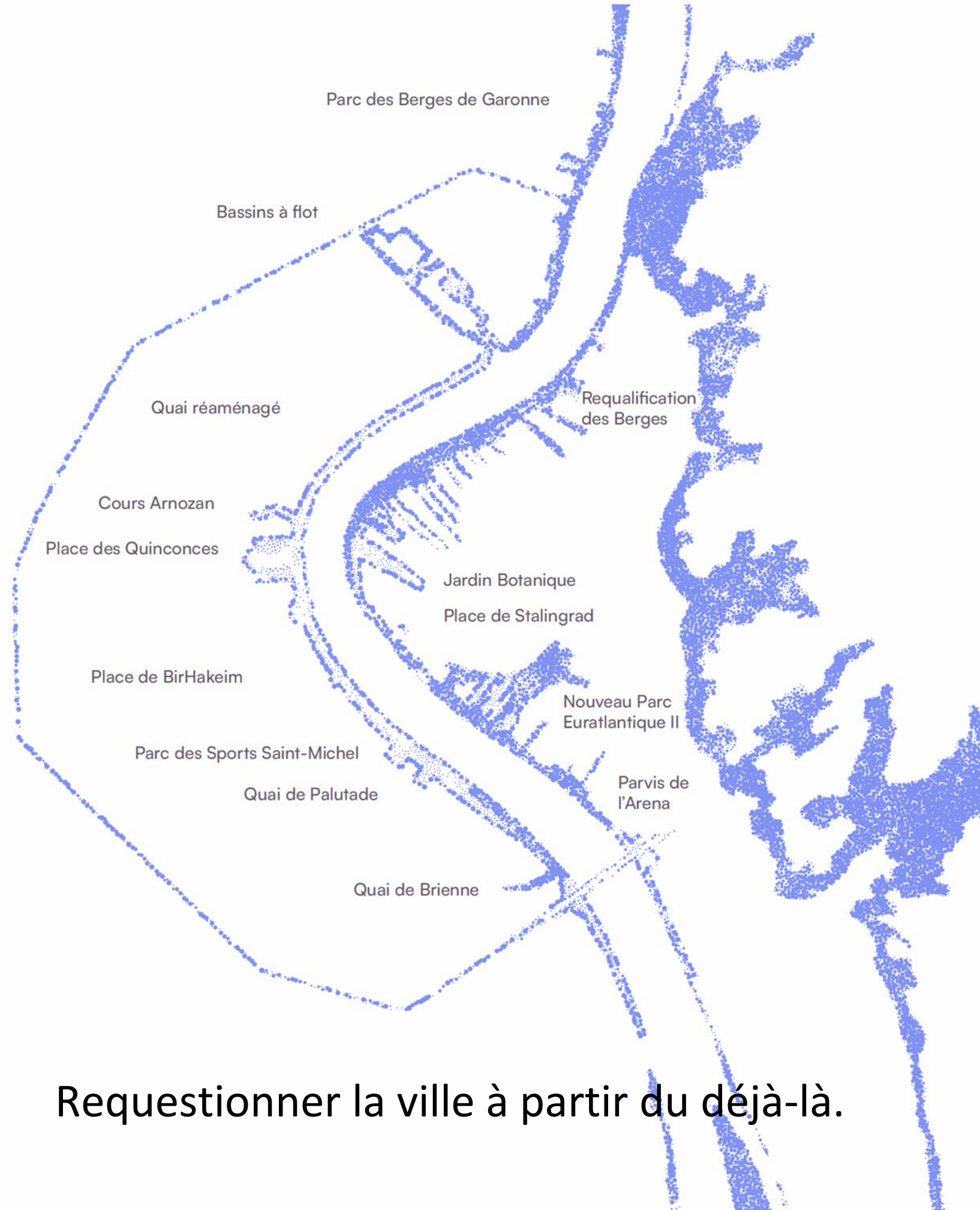


BOULIAC (Gironde) - Vue Générale des Coteaux prise du Marais



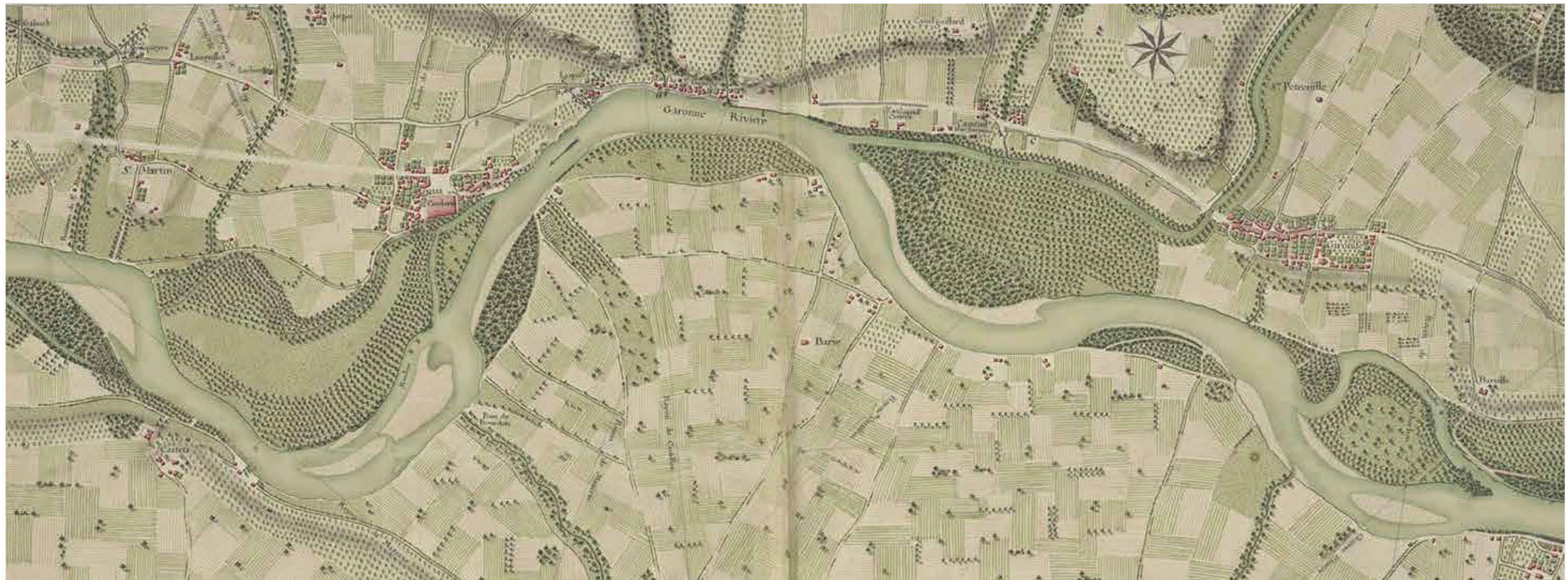
La Dune rue Ernest Renier - Blaye

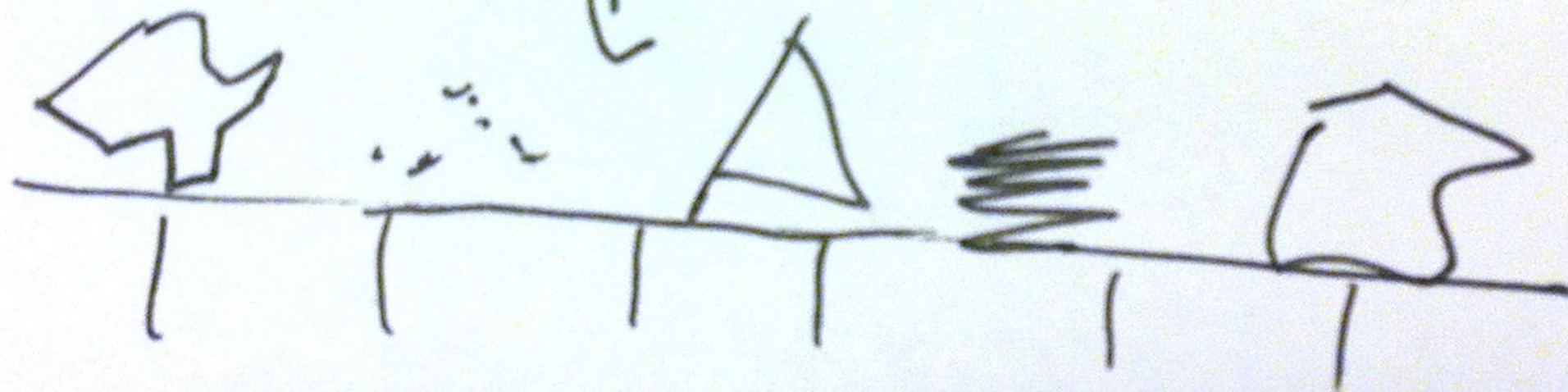
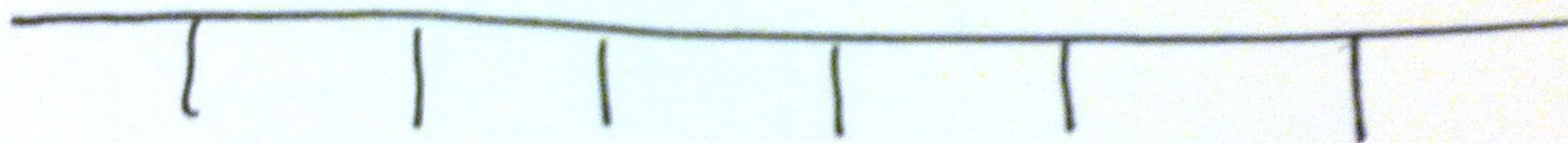
Visé Nantes, M

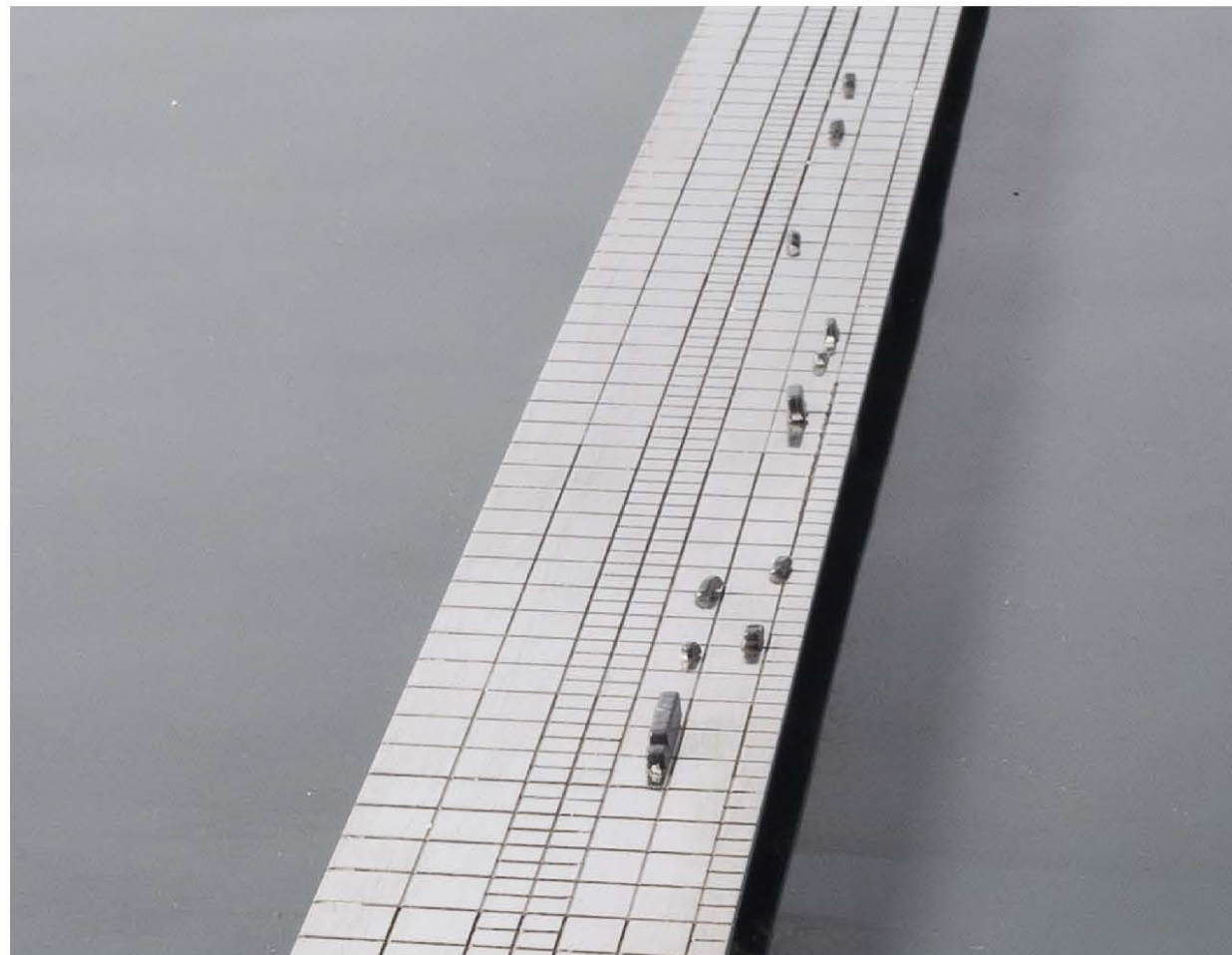


Requestionner la ville à partir du déjà-là.

LA GARONNE UN PAYSAGE QUI TRAVERSE LE TEMPS. (Atlas de Trudaine 1745 - 1780)









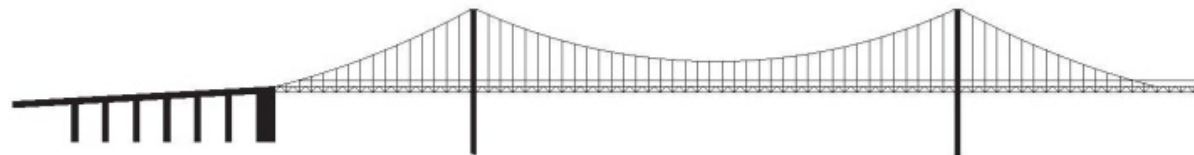
1821 - Pont de Pierre



1860 - Passerelle Eiffel



1965 - Pont Saint-Jean



1967 - Pont d'Aquitaine



2008 - Pont SNCF



2012 - Pont Bacalan-Bastide

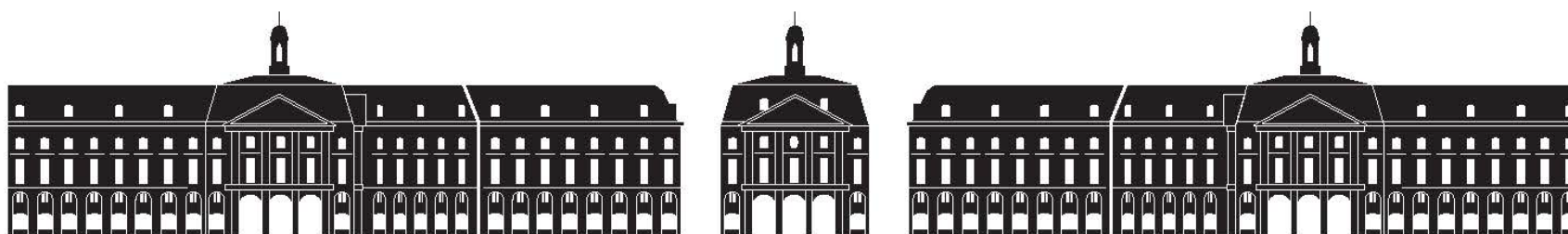


2024 – Pont Simone Veil





PONT DE PIERRE



PLACE DE LA BOURSE



PLATE-FORME NEUTRE

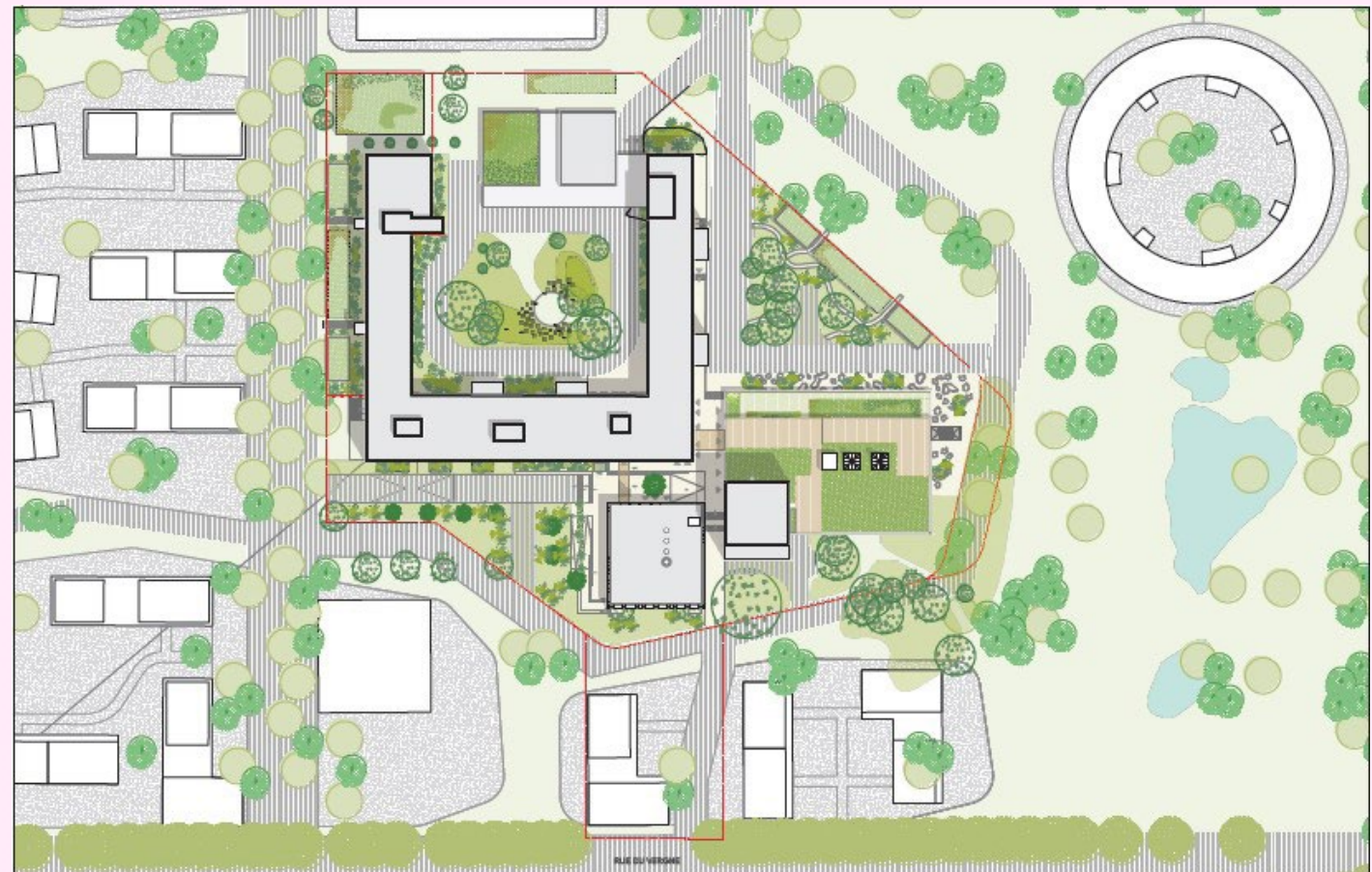
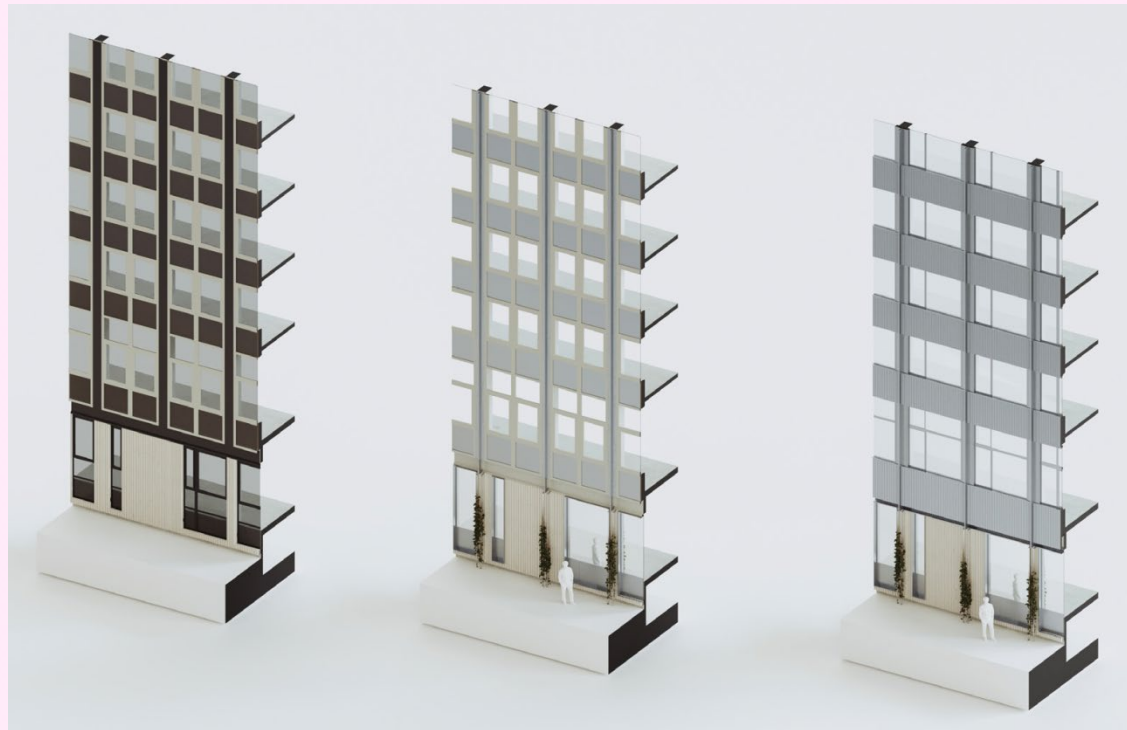


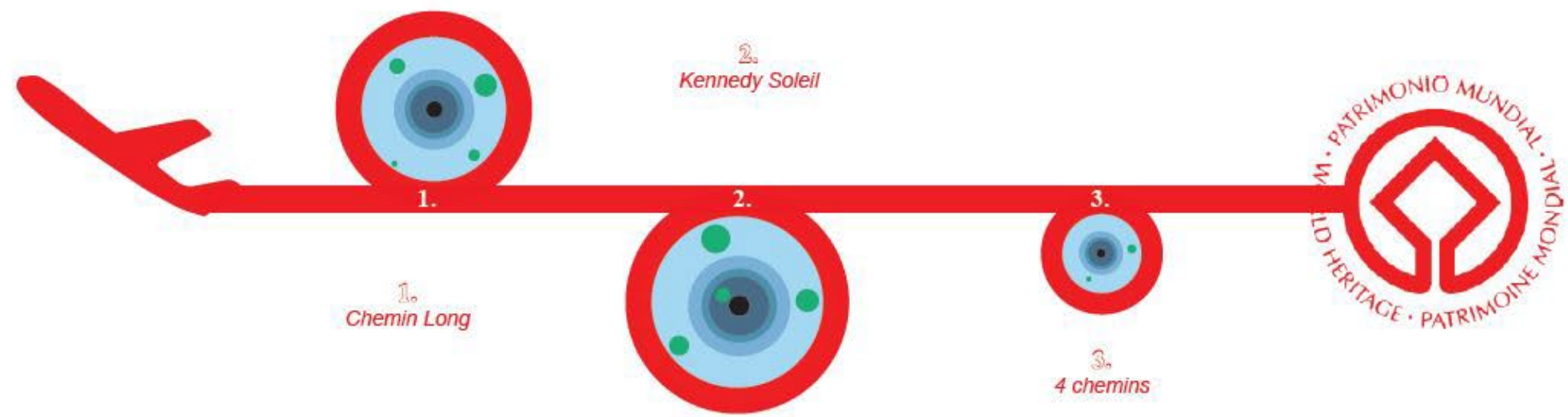
DIVERSITÉ







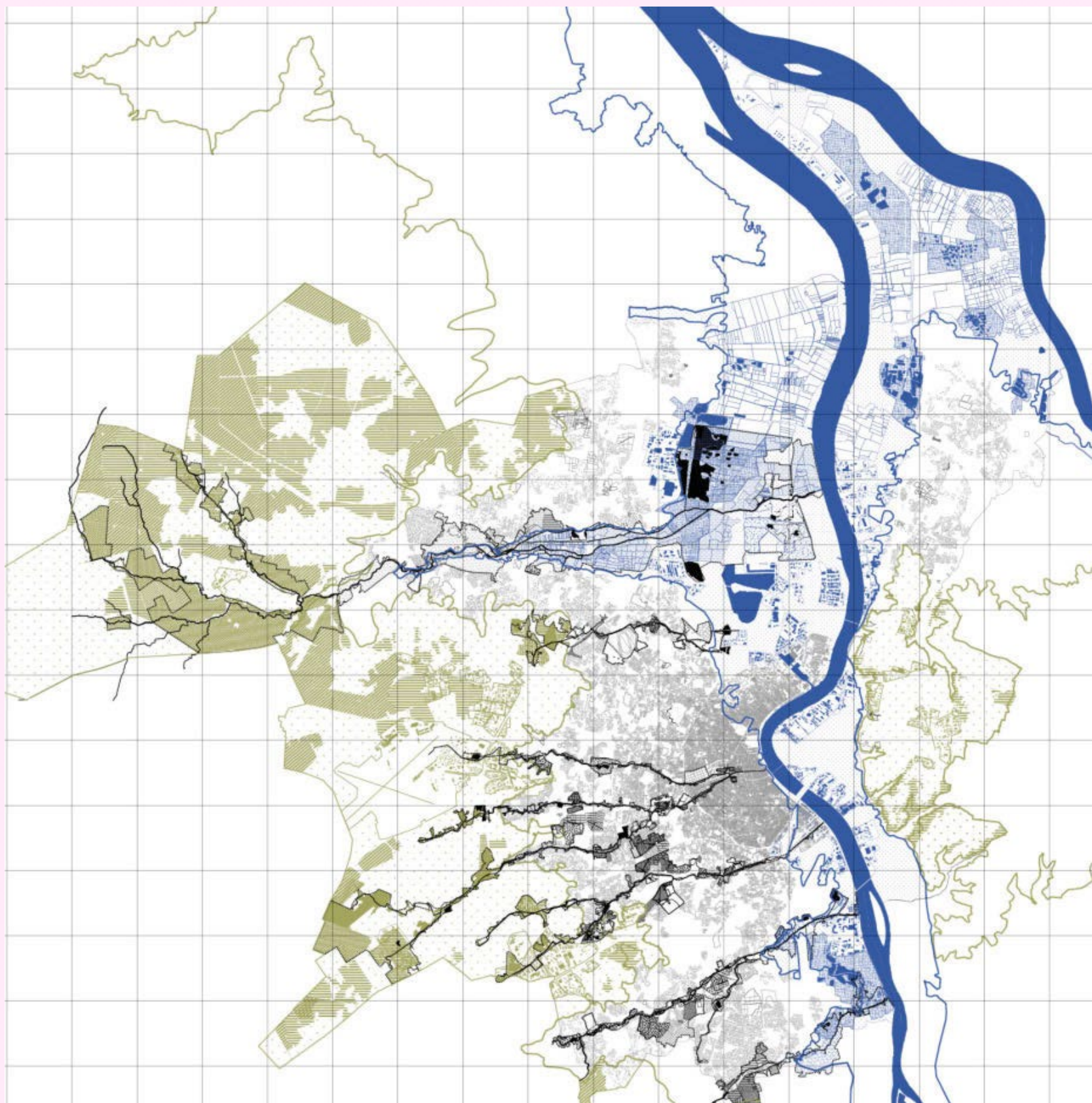




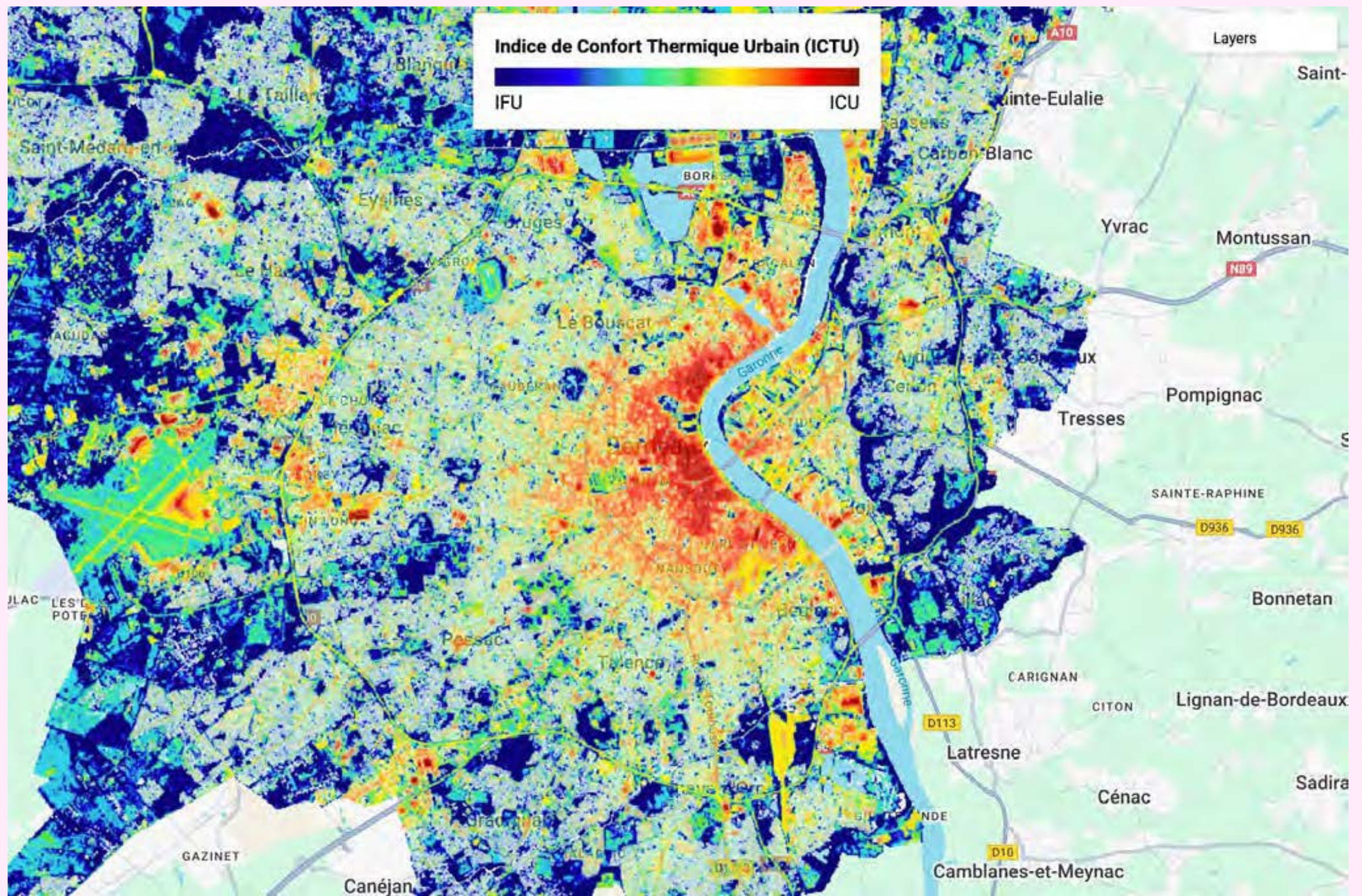








Bas Smets, appuyé sur des études préalables- 55000 hectares pour la nature



A'urba: Renaturation du territoire - opportunité pour les portes de bordeaux

